

SmokeSight Residential Smoke Alarm

By Redbusbar

Part Number: SS10MANN

Description: 240 VAC Mains Power Photoelectric Smoke Alarm with 2xAA 1.5VDC Battery Backup

**PLEASE LEAVE THESE INSTRUCTIONS WITH THE OCCUPANT, TO BE RETAINED FOR THE LIFE OF THE ALARM.
THIS SMOKE ALARM MUST BE INSTALLED BY A LICENSED ELECTRICIAN.**

Read all Instructions before Installation and Operation

Regular testing of this smoke alarm is necessary to ensure the unit is functional and that the battery is in good condition. It is recommended that the smoke alarm be replaced after 10 years of normal service. The only user-serviceable parts are the replaceable backup batteries. Refer to 'Replacing the Backup Batteries'.

DANGER

RISK OF ELECTRIC SHOCK, EXPLOSION OR ARC FLASH

- This product must only be installed and serviced by appropriately qualified and/or licenced electrical personnel.
- This product must only be used for the purpose described in these instructions and must be installed in accordance with the local regulations.
- Hazardous voltages may be present at wires connected to this product.
- Before working on this product, isolate the electrical supply.
- Ensure that the product has been correctly installed and tested for safe operation before reconnecting the electrical supply.

Failure to comply with these instructions may result in death or serious injury.

CAUTION

EQUIPMENT INSTALLATION HAZARD

- This alarm cannot be operated from power derived from a square wave, modified square wave or modified sine wave inverter. These inverters are sometimes used in off grid installations such as solar or wind power sources. They produce high peak voltages that will damage the alarm.
- Ensure that the mains supply, active and neutral is wired to the correct terminals.
- Ensure that green LED is ON when mains supply is on.
- Ensure that red LED is not fast flashing.
- Smoke Test each interlinked alarm. Check to ensure every interlinked alarm, alarms correctly. If any unit fails to alarm, check all wiring and connections.

Failure to follow these instructions may result in equipment damage or injury.

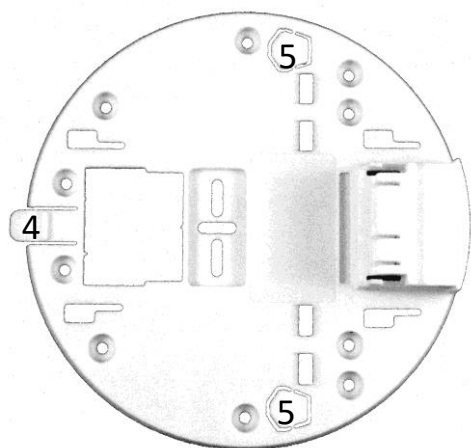
Smoke Alarm – Top View



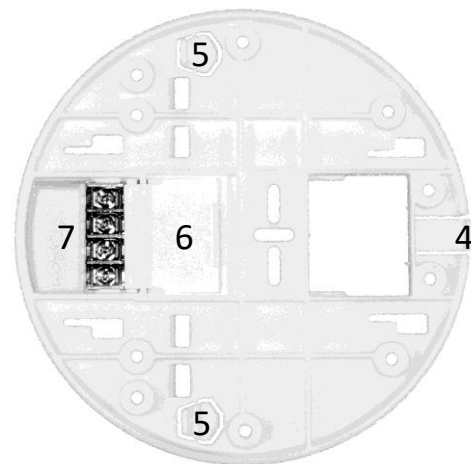
1. Mains (Green) LED
2. Alarm (Red) LED
3. Smoke Alarm Battery Holder

Smoke Alarm – Bottom View



Mounting Base – Top View

- 4. Locking Tab
- 5. Tamper Clip
- 6. Mains Lid
- 7. Mains, Loop and Interlink Terminals

Mounting Base – Bottom View

Specifications

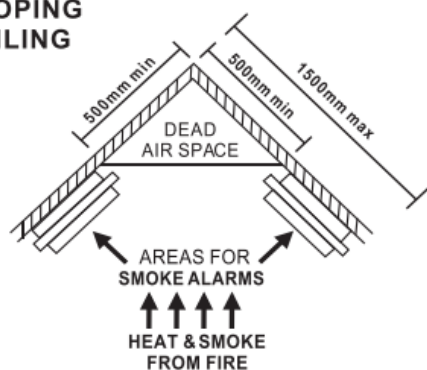
Application	Residential Smoke Alarm for domestic dwellings
Installation	Ceiling or wall mounted
Primary Power Supply	220/240VAC, 50Hz, 30mA
Terminals	4 Screw Terminals Voltage Rating: 300VAC Conductor Size: 2 × 1.5 mm ² , min cable size: 1mm ²
Secondary Power Supply	2 x 1.5VDC AA Batteries
Sensing Type	Photoelectric. The smoke alarm contains NO radioactive material

Environment	Altitude: 0m to 2,000m Temperature: 0°C to 40°C Humidity: 5% to 95%
Audible Indication	Alarm: 85dBA at 3m, ISO 8201 Battery Low: Chirp
Visual Indication	Mains Supply: Green LED Alarm: Red LED
Interlink	Wired: 40 alarms over 150 metres maximum
Compliance	AS 3786:2014, AS/NZS 60065, AS/NZS 60950.1, IEC 62599.2

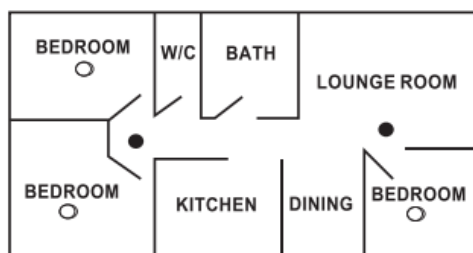
Locations

This smoke alarm can be used in all residential homes and apartments and positioned in accordance with building regulations and state legislation. Refer to figure below when deciding the number of and location of smoke alarms. Avoid dead air space positions. Install smoke alarms along exit paths from bedrooms. Locate alarms in stairways as stairways act as chimneys for smoke and heat. Locate a smoke alarm in any area where a smoker sleeps or where electrical appliances are used in bedrooms. Smoke, heat and other combustion materials rise to the ceiling and spread horizontally. In a residential dwelling, mount the smoke alarm in the centre of the ceiling. In mobile homes, wall mount the smoke alarm on an inside partition to avoid the thermal barrier that may form under the ceiling.

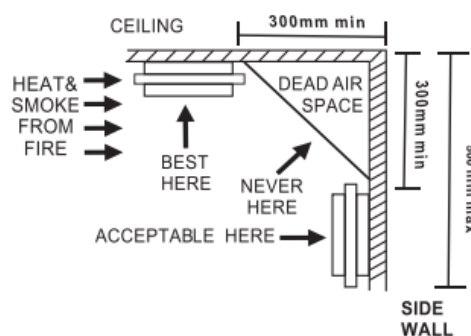
APEX OF SLOPING CEILING



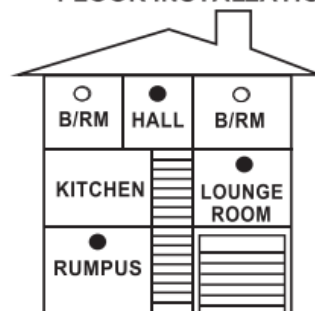
SINGLE FLOOR



CEILING/ WALL JUNCTION



TYPICAL MULTIPLE FLOOR INSTALLATION



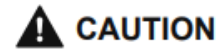
- Smoke alarms for minimum protection.
- Smoke alarms for additional protection.

Alarm Locations to Avoid

- Within 1 metre of air conditioner ducts, ceiling fans and other high air flow areas. Smoke may be blown away or diffused in these areas.
- In areas where the temperature may fall below 0°C or rise above 45°C. Failure to alarm, improper alarms or nuisance alarms may result.
- In damp or very humid areas such as bathrooms or laundries, where the normal humidity may rise above 95% or fall below 5% relative humidity. False alarms and unstable operation may result.
- In areas where particles of combustion are normally present, such as garages or kitchens, as this can cause false alarms.
- In dusty or dirty areas, as an accumulation of dust and dirt in the sensing chamber may block the openings and prevent an alarm, or may cause false alarms.
- Where bugs or insects are present as they may block the openings and prevent an alarm, or may cause false alarms.
- Within 1 metre of electrical noise sources, e.g. fluorescent lights, LED lights and fan motors. Electrical noise may cause nuisance alarms.

Wired Interlinked Smoke Alarms

Interlinking smoke alarms ensures that if one alarm senses smoke, all of the connected alarms will operate (alarm). While all interlinked alarms will sound, only the alarm(s) that sensed smoke will fast flash their red LED. A signal is applied to the interlink wire (referenced to neutral) to connect to the other interlinked alarms. Alternate smoke alarms (Part# SS10MAMA or SS10LNAN) may be purchased separately if wired connection is not possible. Refer to 'Installation' for the interlink connection arrangement.



CAUTION

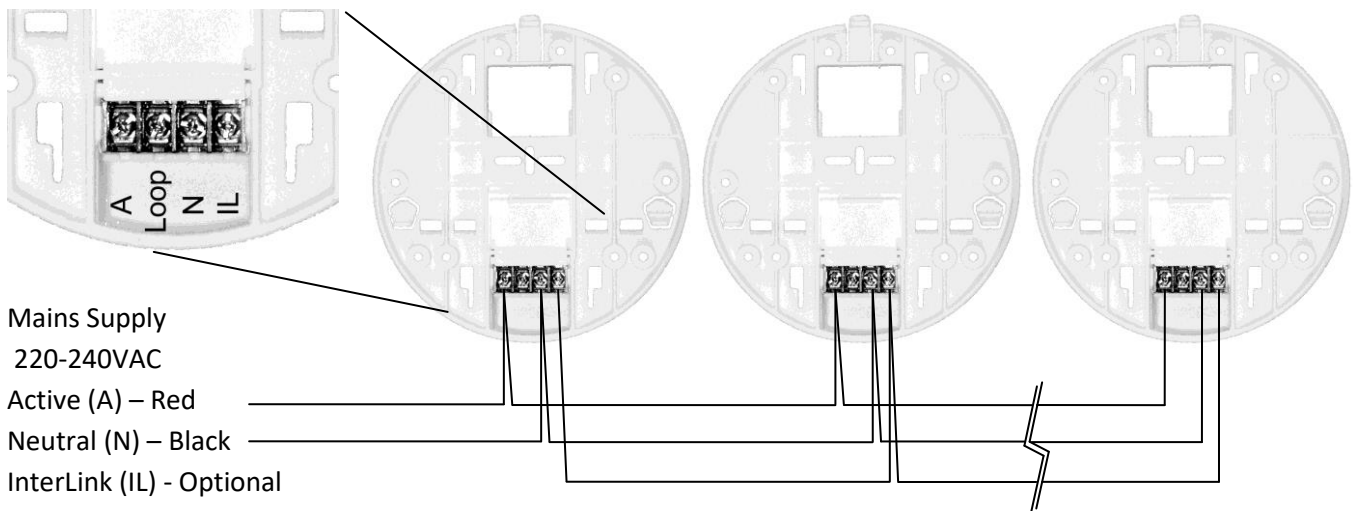
EQUIPMENT INSTALLATION HAZARD

- All interlinked smoke alarms must be supplied from the same circuit. A common Neutral must be used
- DO NOT connect the Interlink wire to Active or Neutral.
- Maximum of 40 interlinked smoke alarms.
- Only SmokeSight alarms can be interlinked.

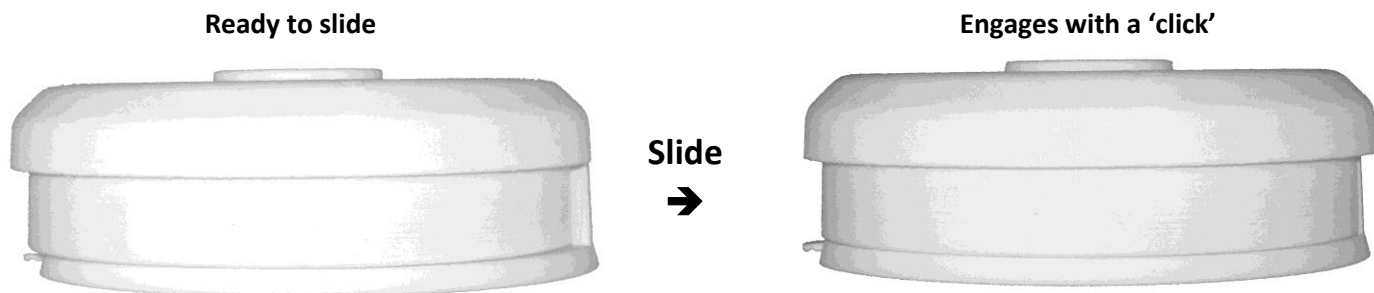
Failure to follow these instructions may result in equipment damage or injury

Installation

1. If tamper prevention is required, prevents alarm removal without the use of a tool, remove the Tamper Clip from the mounting base by twisting it back and forth until it breaks loose.
2. Strip the Active, Neutral and Interlink (if used) wires. Use a minimum of 1mm² 250VAC insulated wire for all wiring, including the interlink wiring.
3. Connect the wires to the correct terminals on the base and ensure that the terminal screws are tight.
4. Slide the terminal cover closed to avoid contact with the live terminals.



5. Screw the mounting base onto the ceiling or wall using appropriate fasteners. Screw diameter 8gauge/4mm.
6. Apply smoke alarm power by installing 2xAA batteries into the bottom battery bay of the smoke alarm. Engage and slide the smoke alarm along the mounting base until it is fully home and it 'clicks'. The smoke alarm will only travel home and click if the smoke alarm batteries are installed. Note: Do not attempt to slide the alarm onto the mounting base unless the smoke alarm batteries are installed as damage may result.



7. Turn on the mains power and check that the green and red LEDs function. The Green LED should illuminate to show mains power present. The red LED will flash every 5mins and 45secs to indicate correct operation and that the battery backup is functional.
8. Press the Test+Hush button to check that the alarm sounds.
9. If tamper prevention is required, slide the Tamper Clip between the ceiling and the mounting base, locking tab. The Tamper Clip can be removed by gripping it with pliers and pulling the clip away from the smoke alarm.



Installation is not complete until the green and red LEDs are functioning correctly and the alarm has been checked for correct operation.

Operation

Once the mains supply is connected and the batteries are installed correctly, the smoke alarm is operational. If smoke is detected the alarm will sound and the red LED will flash rapidly. This will continue until the air is cleared of smoke. During normal operations the red LED flashes once every 5mins and 45secs to indicate that the smoke alarm and battery backup is functional. The green LED is illuminated when the mains power is applied.

When the Alarm Sounds

1. Alert small children in the home.
2. Leave immediately by your plan of escape. Don't waste time getting dressed or picking up valuables.
3. When leaving, don't open any inside door without first feeling its surface. If hot, or if you see smoke seeping through cracks, don't open that door! Instead, use your alternate exit. If inside the door is cool, place your shoulder against it, open it slightly and be ready to slam it shut if heat and smoke rush in.
4. Stay close to the floor if air is smoky. Breathe shallowly through a wet cloth if possible.
5. Once outside, go to your selected meeting place and make sure everyone is there.
6. Call the Fire Brigade from your neighbour's home - not from yours!

7. Don't return to your home until officials say that it is safe to do so.
For further information on fire safety contact your local Fire Brigade.

Testing

TEST THE SMOKE ALARM ONCE PER MONTH TO ENSURE CORRECT OPERATION. Test by pushing the Test+Hush button on the smoke alarm until the alarm sounds. The alarm will sound if all electronic circuitry, horn and battery are functional. Any Interlinked alarms will also sound. If no alarm sounds, check that the battery is installed correctly or replace the battery. If the battery is new and installed correctly and the alarm still doesn't sound, replace the smoke alarm. If the smoke alarm is installed in a mobile home, test weekly and after every journey. After the Test+Hush button has been pressed, wait 10mins before any additional testing is conducted to avoid any false alarm responses as the alarm is in reduced sensitivity mode during this period. Refer to 'Hush'.

IMPORTANT: If premises are unoccupied for a period of time (more than a few days) then a battery test should be undertaken upon return. If the low battery warning sounds, test and replace the battery if necessary.

Never use an open flame of any type to test your alarm. Check that all interlinked smoke alarms operate during the test.

Hush

This smoke alarm has a built-in Hush feature incorporated into the Test button. If cooking or other non-hazardous sources cause the alarm to sound, it can be temporarily silenced by pressing the Test+Hush button. The alarm then enters a low sensitivity period for 9mins. If the smoke density increases during this period from a smoke or fire event, the unit will go into alarm mode.

Before using the alarm HUSH feature, identify the source of smoke and be certain that a safe condition exists.

Replacing the Backup Battery

The backup power to the smoke alarm is supplied by two AA 1.5VDC alkaline batteries, located in the bottom battery bay of the smoke alarm. The batteries should last a minimum of five years under normal operating conditions. An audible chirp once per minute indicates that the battery needs to be replaced. Pressing the Test+Hush button will silence the low battery chirp for up to 8 hours. It is recommended to replace the batteries on a memorable day eg 1st April, April Fool's Day.

RECOMMENDED BATTERIES: Energizer E91, Duracell MN1500, Fujitsu LR6

TEST THE OPERATION OF THE SMOKE ALARM BY PRESSING THE TEST+HUSH BUTTON AFTER BATTERY REPLACEMENT



Troubleshooting

	CONDITION	CAUSE	REMEDY / ACTION
ALARMS & HUSH	Alarm sounds and the red LED is blinking rapidly.	Smoke has activated the smoke alarm	If the cause is unknown, vacate the building immediately and call the Fire and Emergency Services. If the cause is known to be a false alarm, see "False Alarm" section below.
	Alarm sounds but the red LED is OFF.	Smoke has activated an interlinked alarm, located somewhere else in the dwelling.	
	Smoke alarm is sounding, it does not stop when Test+Hush is pressed.	Smoke density is too high, even in low sensitivity mode, for the Hush feature to activate.	
	Smoke alarm is sounding, it stops when Test+Hush is pressed.	Low sensitivity mode has been activated for 9mins	Make sure you are safe and have eliminated the source of the smoke. See "False Alarm" section below.
	While the Test+Hush button is pressed the alarm sounds	The smoke alarm is indicating that all electronic circuitry, horn and battery are functional.	Normal test condition. Test regularly to ensure proper operation
	While the Test+Hush button is pressed the alarm does not sound	The smoke alarm may not be operating correctly.	Check that the green LED is ON and the red LED flashes once every 5mins. If problem persists contact an electrician for replacement.
CHIRP	One audible chirp every 40 to 50secs	Low battery warning.	Replace the 2xAA 1.5VDC batteries. Press the Test+Hush button to silence the low battery chirp for up to 8 hours.
	Three audible chirps every 40 to 50secs	The smoke alarm may not be operating correctly.	Clean smoke alarm according to "Maintenance, Repairs and Service" section. If problem persists contact an electrician for replacement.
LED	Green LED ON.	240VAC mains supply ON.	Normal operating condition
	Green LED OFF.	240VAC mains supply OFF.	Check that mains power is ON. Main circuit breaker may have tripped. Wiring could be incorrect.
	Red LED flashes every 5mins.	The smoke alarm is functioning correctly.	Normal operating condition.
	Red LED flashes every 8 to 12secs.	The smoke alarm is in low sensitivity mode. Test+Hush button has been pressed.	Wait 10mins to return to normal operating mode.
	Smoke alarm will not slide along the base until it clicks.	Battery or batteries missing	Install missing battery or batteries

False Alarm

In the event of a false alarm (alarms are sounding without any smoke present):

1. Identify which smoke alarm/s are in alarm state – Look for the alarm/s sounding and with red LED fast flashing.
2. On each smoke alarm in alarm state press the Test+Hush button to silence the alarm
3. Disconnect all smoke alarms in the alarm state by removing them from their base.
4. Clean smoke alarms in accordance with the “Maintenance, Repairs and Service” section.
5. Re-install and test all the smoke alarms.

IMPORTANT: If the above process fails, contact a licenced electrician to investigate.

Maintenance, Repairs and Service

It is recommended that the smoke alarm is inspected monthly to ensure it is free from dirt, dust and insects. The alarm can be vacuumed or brushed with a soft brush to remove dust, dirt or kitchen grease that has accumulated.

ALWAYS TEST THE SMOKE ALARM AFTER CLEANING.

If the smoke alarm is defective in any way, do not tamper with the smoke alarm. The smoke alarm does not contain any user-serviceable parts. As the smoke alarm does not contain any radioactive material, disposal with domestic rubbish is permitted in Australia and New Zealand.

Warranty

Redbusbar Pty Ltd, warrants this product to be free from defects in materials and workmanship for a period of 5 (five) years from the date of installation. Refer to the Redbusbar terms of sale for full warranty conditions

<http://www.redbusbar.com/Terms-and-Conditions.html>

Redbusbar reserves the right to change specifications, modify designs and discontinue items without incurring obligation and whilst every effort is made to ensure that descriptions, specifications and other information in this document are correct, no warranty is given in respect thereof and the company shall not be liable for any error therein. © Redbusbar 2018. Redbusbar acknowledges that the Activfire Certified logo is a trademark of CSIRO.

